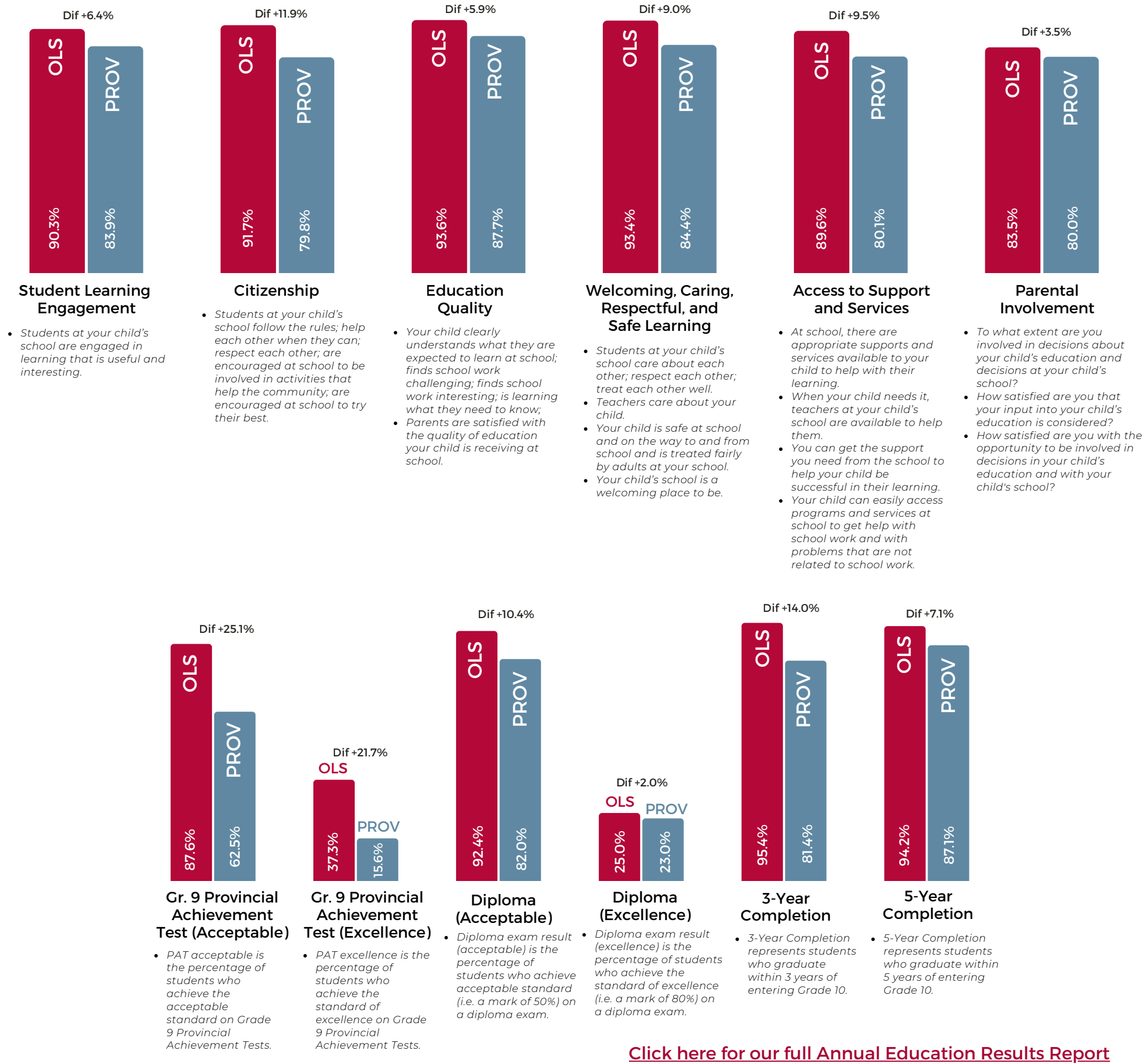




ALBERTA ASSURANCE ANNUAL EDUCATION RESULTS

Alberta Education Assurance is a set of 12 performance measures calculated by Alberta Education for schools and school boards across the province. Schools and school boards are evaluated based on achievement, improvement, and overall performance.



[Click here for our full Annual Education Results Report](#)

Insights

- Academics continue to be strong at Our Lady of the Snows. Our school exam results are above the province in every measure. Our Grade 9 PAT standard of excellence was more than double the provincial rate, at nearly 40% and our Diploma acceptable rate was more than 10% higher than the province.
- Students are engaged in their learning at Our Lady of the Snows. 90.3% of our students, staff and parents agree that students are engaged in their learning. Our student responses to questions about their engagement improved by over 10% last year and is 9.6% higher than the provincial average.
- Our Lady of the Snows students are engaged citizens with significant opportunities. 87.7% of our students say their peers model the characteristics of active citizenship, 17.4% above the provincial results. This includes helping each other out, respecting one another, and being encouraged to participate in helping their community.
- Our Lady of the Snows is a welcoming, caring, and safe environment. 93.4% of students, staff, and parents agree that OLS is safe and caring, compared to a provincial average of 84.4%. Students at OLS agree to this at a rate 13.4% higher than the province.

Faith Survey Results

- 90%

Percentage of students, parents, and teachers who indicate that they are satisfied with the relationship that exists between the school and the local Catholic parish.
- 90%

Percentage of students, parents and teachers who are satisfied with the religious celebrations that are celebrated with the school.
- 90%

Percentage of students, parents and teachers who are satisfied with what is being taught in religious education classes.
- 91%

Percentage of students, parents and teachers who indicate they are satisfied with the level of Catholic faith formation of students at the school.
- 90%

Percentage of students, parents and teachers who indicate they are satisfied with the efforts to live our Catholic Social Teaching at school.

Insight:

- Our Lady of the Snows helps students grow in their faith. 90% of our community agree that they are satisfied with their opportunities for faith formation at the school and in partnership with the parish.